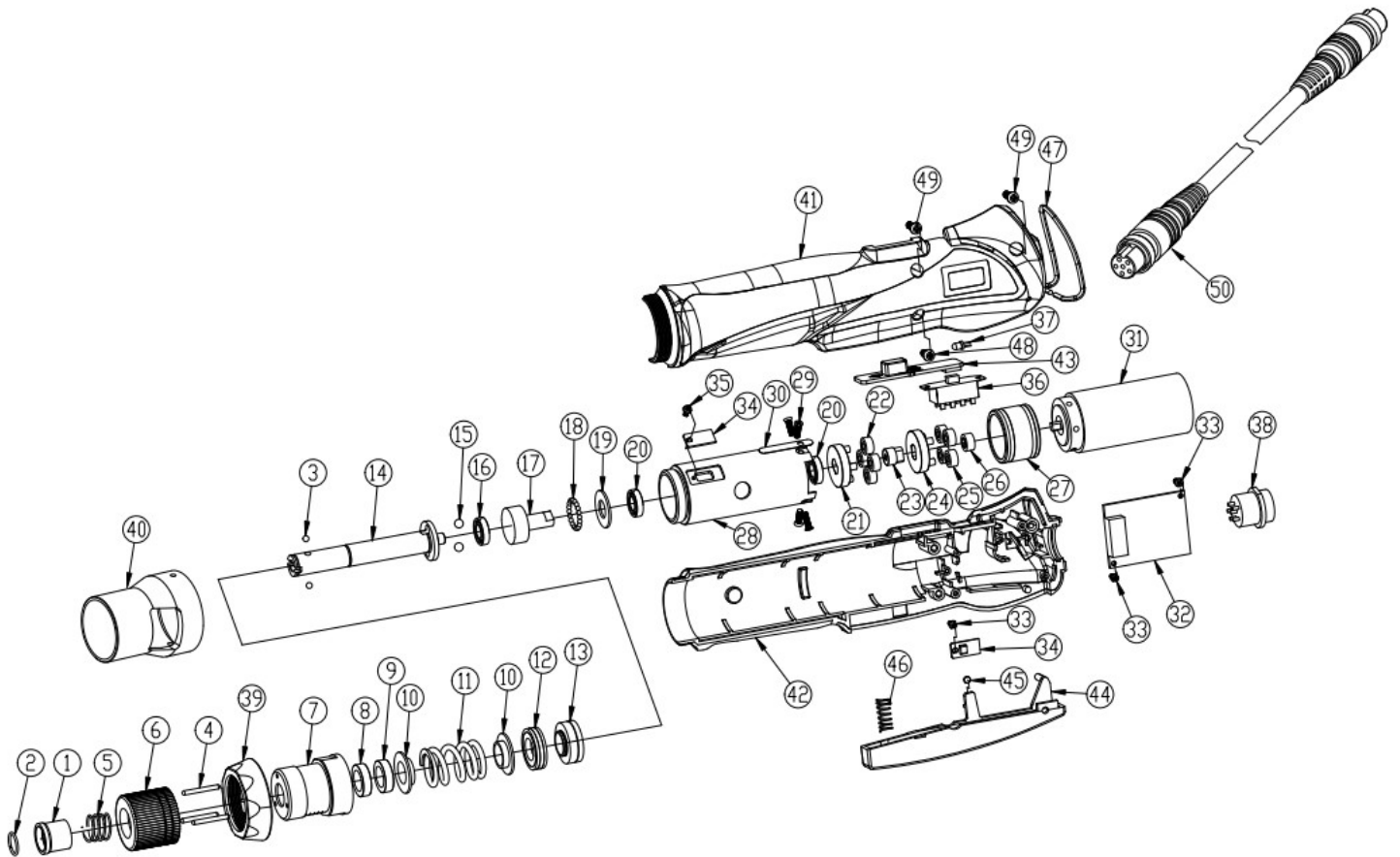


# DC BRUSHLESS SHUT-OFF ELECTRIC SCREWDRIVER(KIT)中型無刷



NO	PART NAME(E)	PARTS NAME(C)	Q'ty	NO	PART NAME(E)	PARTS NAME(C)	Q'ty
1	BIT SLEEVE	起子軸帽	1	25	IDLE GEAR	上游星齒	4
2	C-RING	軸帽C環	1	26	GEAR	主齒	1
3	BIT PILOT Ø5	起子軸帽鋼珠Ø5	2	27	INTERNAL GEAR	內齒	1
	BIT PILOT 1/4"	起子軸帽鋼珠1/4"	2	28	GEAR CASE	齒輪筒	1
4	TORQUE ADJUSTING PINS	頂針	3	29	M2.5 FLAT HEAD SCREWS	M2.5平頭螺絲	4
5	BIT SPRING	軸帽彈簧	1	30	GROUNDING MEANS	接地墊片	1
6	TORQUE ADJUSTING RING	扭力調整圈	1	31	MOTOR ASSEMBLY	無刷馬達	1
7	TORQUE CASE	扭力筒	1	32	P.C.B	控制晶片	1
8	GROUNDING BEARING	銅套(低阻抗)	1	33	M2 SELF-TAPPING SCREWS	M2自攻螺絲	3
9	TORQUE BEARING	扭力筒軸承	1	34	HOLD SENSOR	霍爾晶片	2
10	SPRING SEAT	彈簧上下蓋	2	35	M2 SCREWS	M2螺絲	1
11	WARING SPRING	扭力彈簧	1	36	CHANGEDOVER SWITCH	三段切換開關	1
12	SHUT OFF ASSEMBLY	剎車感應磁鐵組	1	37	LED LIGHT	LED燈	1
13	CLUTCH ASSEMBLY	離合器控制盤組	1	38	6PIN CONNECTOR	6P接頭	1
14	SHAFT-Ø5TYPE	連接軸Ø5	1	39	COUPLER	前鎖環	1
	SHAFT-1/4"TYPE	連接軸1/4"	1	40	TORQUE COUPLER	扭力護套	1
15	STEEL BALLS	跳脫鋼珠	2	41	HOUSING-UPSIDE	起子外殼(上蓋)	1
16	SHAFT BEARING	連接軸軸承	1	42	HOUSING-UNDERSIDE	起子外殼(下蓋)	1
17	SHAFT GUIDE	離合器	1	43	CHANGEDOVER PUSH BUTTON	三段開關推鈕	1
18	BEARING STEEL BALLS	軸承鋼珠	21	44	TRIGGER ASSEMBLY	壓扣板	1
19	SHAFT GASKET	離合器墊片	1	45	INDUCTION MAGNET	N35 3mm磁鐵	1
20	MAIN BEARING	齒輪筒軸承	1	46	TRIGGER SPRING	壓扣板彈簧	1
21	GEAR SEAT	下齒盤	1	47	SUSPENSION RING	起子掛勾	1
22	IDLE GEAR	下游星齒	4	48	M3X6 SELF-TAPPING SCREWS	M3X6自攻螺絲	1
23	CENTRAL GEAR	中心齒	1	49	M3X8 SELF-TAPPING SCREWS	M3X8自攻螺絲	2
24	GEAR SEAT	上齒盤	1	50	CORD ASSEMBLY 2M	6P電源線	1